

How to Dispose of Bagged waste

Please separate and dispose of each item in the special bags ordered in advance.

Burnable Garbage



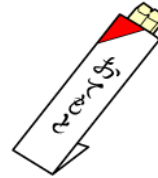
kitchen waste



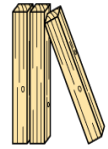
Cigarette end



Waste paper



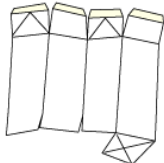
One-off chopsticks



Wood chips of 50 cm square or less



Fallen leaves



Milk/drink cartons



Paper cup



Mixture paper



Newspapers



100%cotton cloth

Non-burnable(recyclable) Garbage



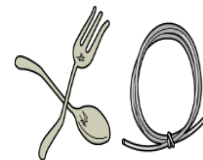
Plastic products



Vinyl products



Glasses ceramics



Metals



Rubber products



Empty cans



Empty bottles



Empty PET bottles



Spray cans

※Please puncture the spray can.
When collecting it,
it causes fire.

※Do not remain contents.

* Please consult with us in advance for hazardous materials, oversize garbage, and recycled appliances.
* Please contact us for any questions about sorting

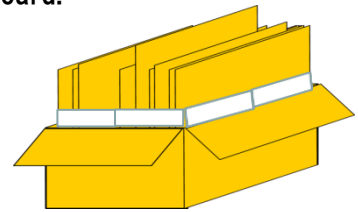
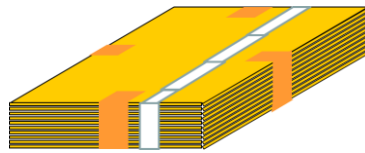
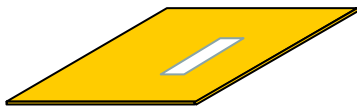
About how to put out recyclable paper ・ styrofoam



Please put the purchased recycle tape on it and put it out.
Recycle tape serves as a proof of payment sticker for waste collection fees
※ 200 sheets per volume, once separated by a dotted line.

Cardboard

Please affix one sheet per corrugated cardboard.



*When disposing in bundles, make 1 bundle 20 cm and attach 4 pieces of recycling tape before disposal.

Magazines ・ Newspapers etc

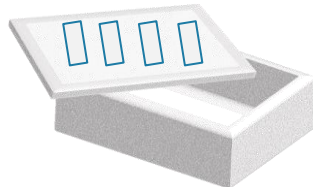
Please apply 4 pieces of recycled tape per bundle.



※ Height of 1 bundle up to 20 cm

Styrofoam

Please apply 4 pieces of recycled tape per box.



*Please consult with us in advance for hazardous materials, oversize garbage, and recycled appliances.
* Please contact us for any questions about sorting